

FOOD
CoST

Redefining
the value
of food

FOODCoST

**Willy Baltussen, Marieke Meeusen, Hans van Meijl (Wageningen
Economic Research)**



Funded by
the European Union



OBJECTIVES



Funded by
the European Union

FOODCOST

OBJECTIVES

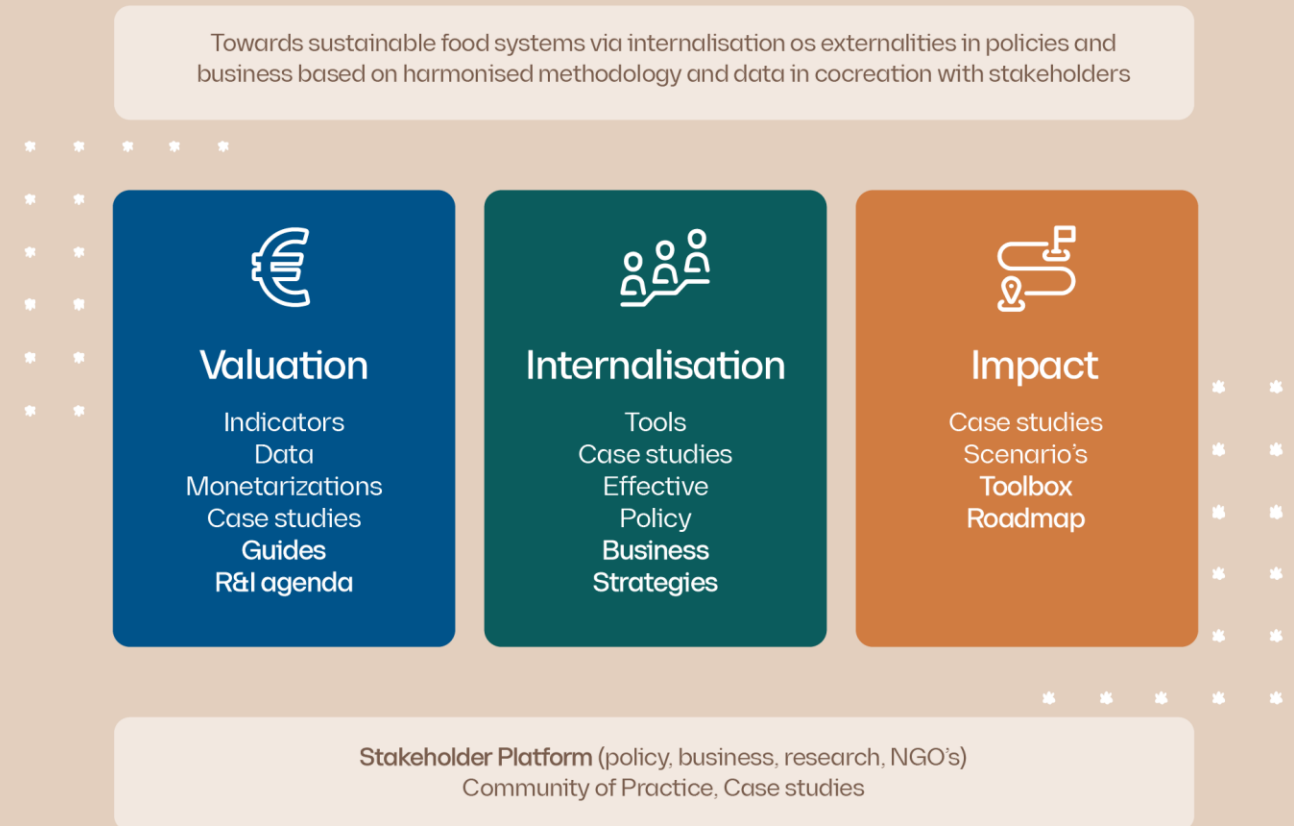
- Towards sustainable food systems via **internalisation** of **externalities** in policies and business based on **harmonized methodology** and **data** in **cocreation** with stakeholders;
- Valuation of externalities: Using **economic cost principals**, a harmonized methodology to calculate externalities along the **food value chain**.

OBJECTIVES

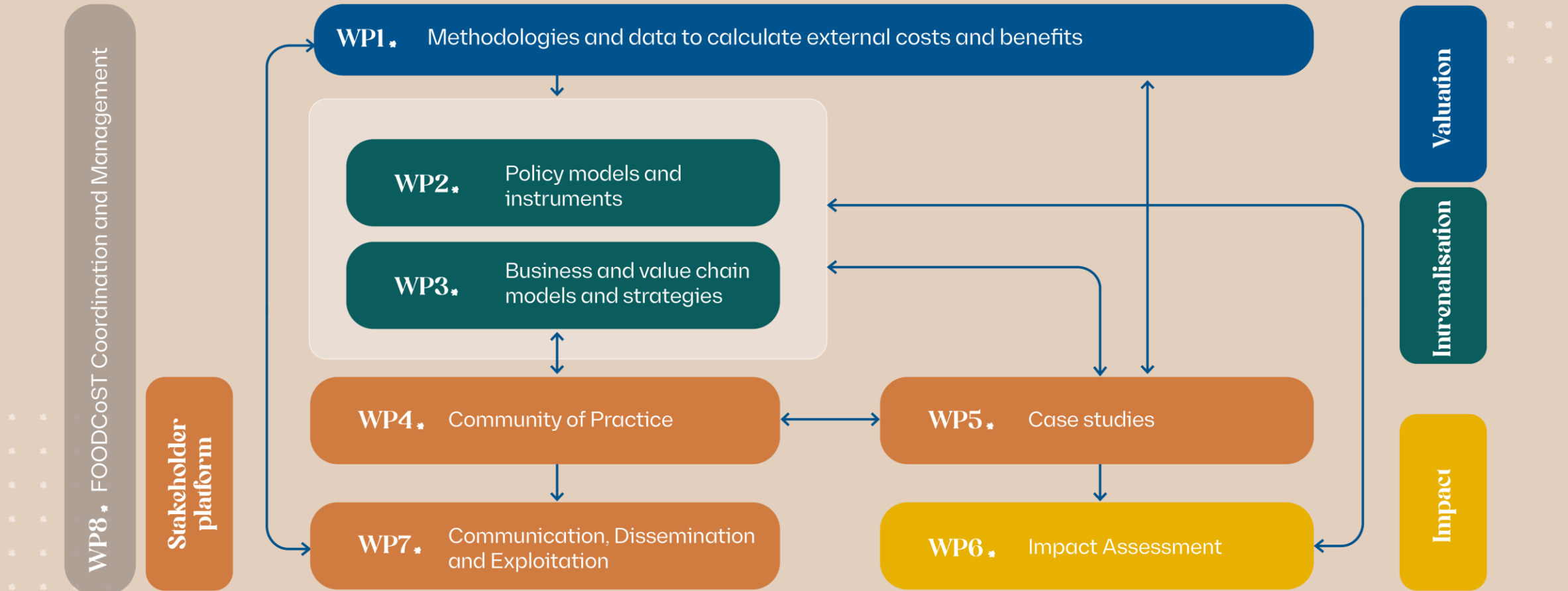
Four key elements:

1. Valuation;
2. Internalisation in
 - Policy and
 - Business strategies;
3. Impact assessment;
4. In interaction with stakeholders.

FOODCOST



WPs and the four key elements



Relation between WPs: WP1-2-3-5-6

From	To	Relation
WP1	WP2	WP1 delivers valuation of externalities / possible data sources & dictionary
WP1	WP3	WP 1 delivers valuation of externalities/ possible data sources & dictionary
WP1	WP5	WP 1 delivers valuation of externalities / possible data sources & dictionary
WP2 (T2.1)	WP1	WP2 pathways to internalize externalities in governmental policies
WP2 (T2.1)	WP5	WP2 delivers models/ knowledge integrating governmental policies in specific case studies
WP2 (T2.1)	WP6	WP2 delivers report on policies with internalised externalities for scenarios building and monitoring
WP3	WP1	WP3 pathways to internalize externalities in business/ supply chain strategies
WP3	WP5	WP2 delivers models/ knowledge integrating business/ supply chain strategies in specific case studies
WP3	WP6	WP2 delivers overview of innovative value chain and business models and strategies to internalise externalities for scenarios building and monitoring
WP5	WP1	WP 5 delivers the applicability of valuation framework in practical cases and availability of good data.
WP5	WP2 and WP3	WP 5 delivers for specific cases ways of internalising externalities and the estimated impact.
WP5	WP6	Learning on case studies for the monitoring
WP1	WP6	WP1 delivers the list of externalities to be taken into account for assessing the impact and for building the scenarios
WP6	WP2 (task 2.3)	WP6 delivers the scenario for the impact assessment that is assessed with the models (MAGNET and CAPRI) adapted in WP2.
WP6	WP5	Feedback loop on the monitoring of case studies

Relation between WPs: WP1-2-3-5-6 and WP4-7-8

From	To	Relation
WP4	WP1, WP2, WP3, WP5, WP6.	Interaction of knowledge /information between project team of FOODCoST and the interested outside world (divided in 5 target groups)
WP4	WP3	Guidance on CoP for the co-creation for the monitoring
WP1, WP2, WP3, WP5, WP6.	WP5	Interaction of knowledge /information between project team of FOODCoST and the interested outside world (divided in 5 target groups)
WP7	WP1	Exchange of project findings with the outside world
WP 8 and WP9	WP5	Management of internal project activities and guarding the ethical aspects

Tentative list of Externalities



Enviromental	Social and human	Economic
Climate Change	Labour rights and conditions	Labour rights and conditions
Acidification and eutrophication	Local community rights and wellbeing	Local community rights and wellbeing
Particulate matter	Equity	Equity
Water stress	Infectuous diseases	Infectuous diseases
Land use and land transformation	Food safety	Food safety
Direct effects on biodiversity and ecosystems	Health effects of diets	
Toxicity	Food security	
Non-renewable resource depletion	Consumer rights	
Ozone and radiation	Animal welfare	
Noise, smell and visual disturbance		

OBJECTIVES

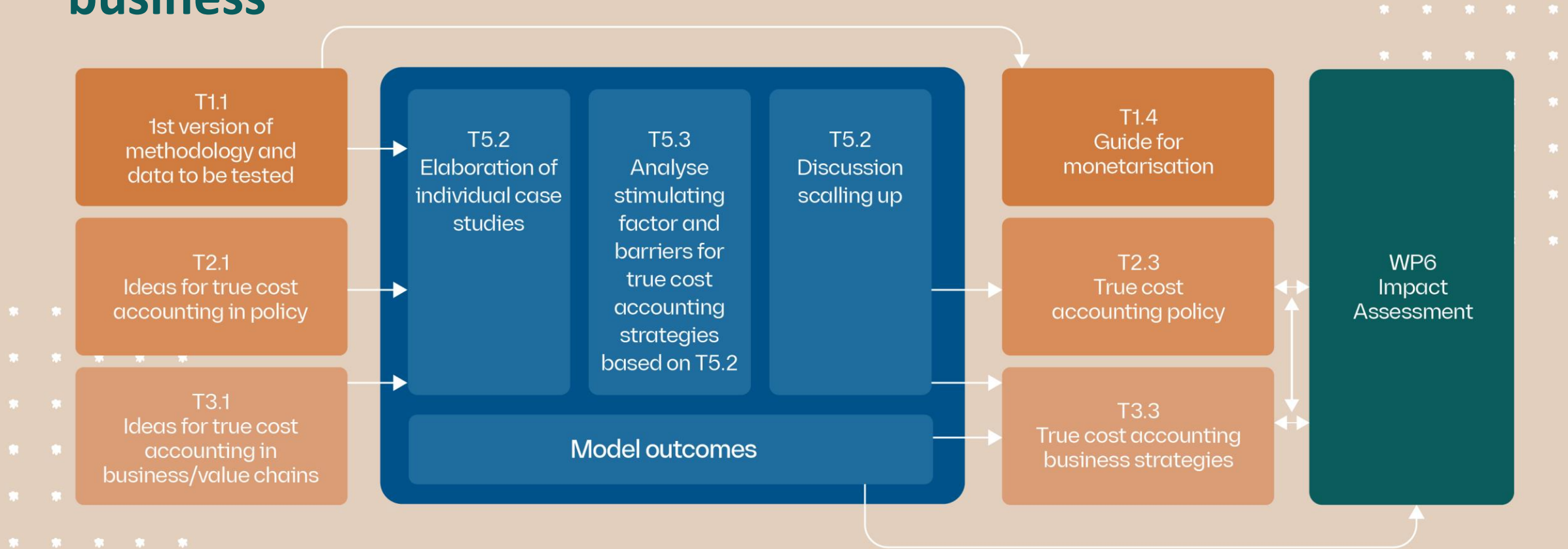
In case studies we will test and evaluate:

- Methodology and data (M&D);
- Policies towards producers and consumers;
- Business strategies towards producers and consumer.

	WP1 M&D	WP2 Policy towards		WP3 Business towards	
		P	C	P	C
CS 1					
CS 2					
CS 3					
CS 4					
CS 5					
CS 6					
CS 7					
CS 8					
CS 9					
CS 10					
CS 11					

M&D - Methodology and Data P- Production C- Consumption

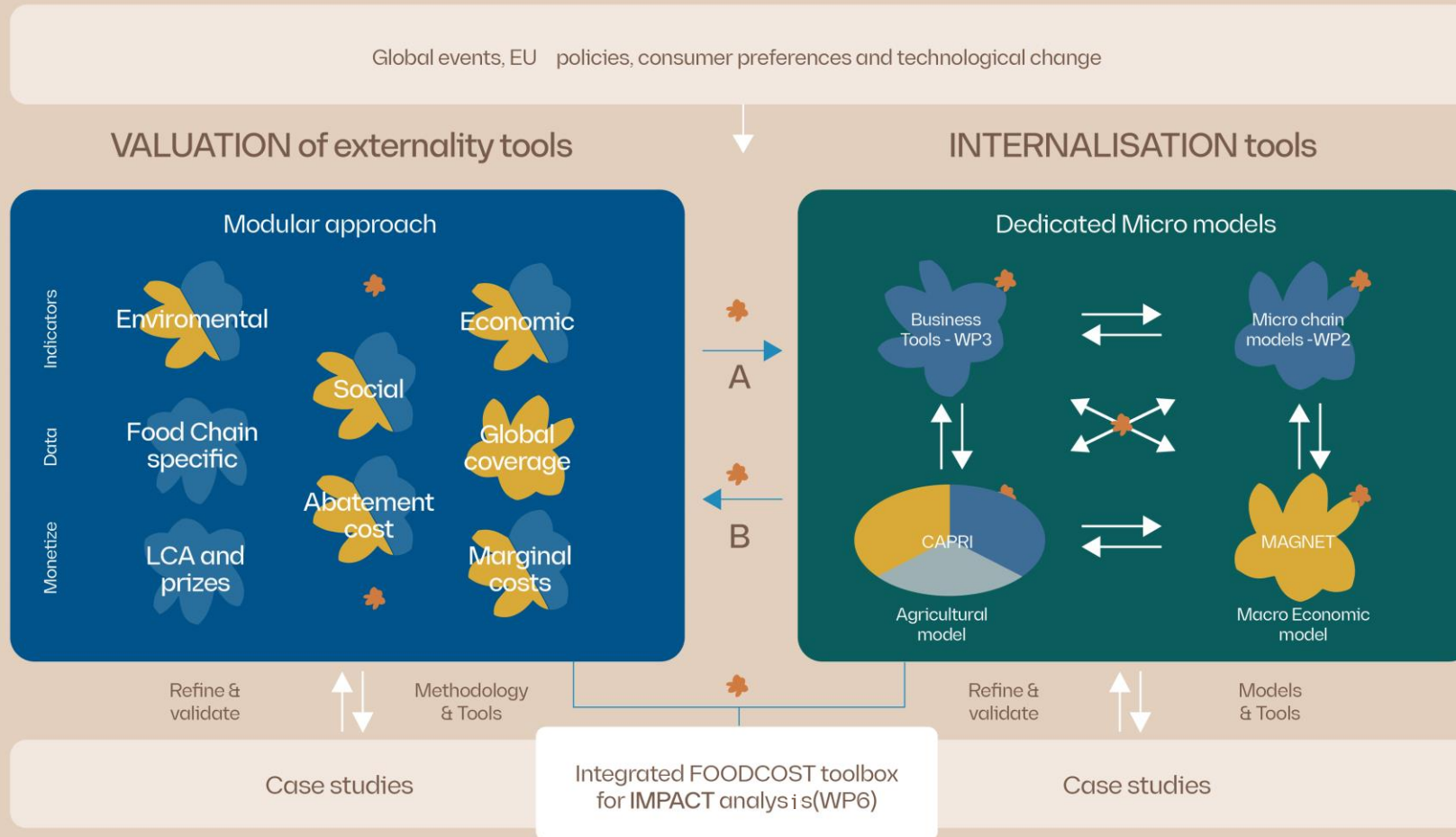
Analyse options for true cost accounting in policy and business



IMPACT ASSESSMENT (WP6)

- Build some scenarios;
- Use general equilibrium models **MAGNET** and **CAPRI** to assess the impact of internalising externalities.

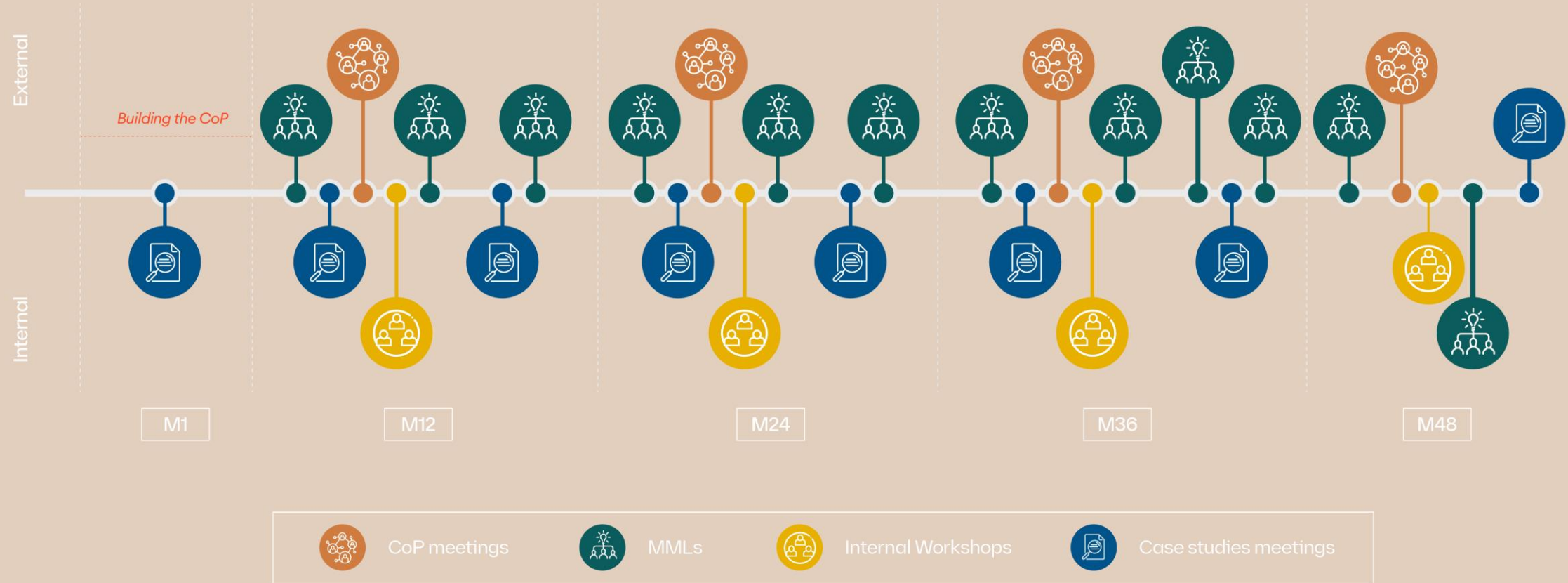
Development of toolboxes helping to assess impacts



STAKEHOLDER PLATFORM (WP4)

- **Community of Practice (CoP)** aims at discussing the outcomes and experiences of concept-results, steering, and feeding the research outputs, also helping to implement results and broadly communicate right from the project start;
- **Mobilisation and Mutual learning workshops** aim at involving experts from related project fields for supporting and debating common issues from different research and innovative backgrounds. Insights from the MMLs will be collected, analysed, and discussed within the CoP.

INTERACTION WITH STAKEHOLDERS IN WP4



A decorative graphic consisting of a grid of small, light blue asterisks. The grid is 6 columns wide and 5 rows high, with the bottom-right corner missing, creating a stepped effect.

QUESTIONS/
REMARKS?



thank you



Funded by
the European Union

FOODCOST

FOODCOST

Redefining the value of food

www.foodcost-project.eu

consortium



This project has received funding from the European Union's Horizon 2020 research and innovation programme under grant agreement No 101060481

@FOODCoSTEU



Talk to us through info@foodcost-project.eu